

- G 1/2" connection with dry and flush capacitance ceramic sensor
- Ranges from 60 mbar to 20 bar
- High overload capability, up to 100 times
- Accuracy $\leq 0,3\%$
- Option: ambient / fluid temperature up to 120°C
- Analog output: 4...20 mA, 2-wire
- Ex I M2 EEx ia I ($\geq 100\text{mbar}$)
- II 1G EEx ia IIC T4/T6 ($\geq 100\text{mbar}$)



Pressure Transmitter P 20

Technical data:

Range:	0...60 mbar to 0...20 bar
Output signal:	4...20 mA, 2-wire
Accuracy:	$\leq \pm 0,3\%$ FS $\geq 100\text{mbar}$ @ 25°C
Time constant T_{90} :	200 ms (other on request)
Supply voltage:	9...30V DC, 4...20 mA output 12...30V Ex-version
Ambient temperature:	-25...80 °C (-25...120 °C) -20...80 °C EEx ia IIC T4 -20...50 °C EEx ia IIC T6
Process temperature:	-25...100 °C (-25...125 °C) -20...80 °C EEx ia IIC T4 -20...50 °C EEx ia IIC T6
Temperature coeff.:	$\leq \pm 0,02\%$ FS/K (zero) $\leq \pm 0,01\%$ FS/K (span)
Long term stability:	$\leq \pm 0,3\%$ FS p. a.
Process connection:	stainless steel 1.4404
Housing:	stainless steel 1.4301
Sensor:	ceramic AL_2O_3
Electr. connection:	connector EN 175301-803A, IP67 connector M12x1, IP67 cable PVC, IP67

Nöding

Meßtechnik

Pressure range	Gauge	overload (bar)
0...60 mbar / 0...6 kPa* ⁽¹⁾	A9	-0,3/4
0...100 mbar / 0...10 kPa	00	-0,3/4
0...160 mbar / 0...16 kPa	01	-0,3/4
0...200 mbar / 0...20 kPa	B1	-0,3/4
0...250 mbar / 0...25 kPa	02	-0,3/4
0...400 mbar / 0...40 kPa	03	-1/6
0...500 mbar / 0...50 kPa	B7	-1/6
0...600 mbar / 0...60 kPa	04	-1/10
0...1,0 bar / 0...100 kPa	05	-1/10
0...1,6 bar / 0...160 kPa	06	-1/15
0...2,0 bar / 0...200 kPa	B3	-1/15
0...2,5 bar / 0...250 kPa	07	-1/15
0...4,0 bar / 0...400 kPa	08	-1/25
0...5,0 bar / 0...500 kPa	F1	-1/40
0...6,0 bar / 0...600 kPa	09	-1/40
0...10 bar / 0...1 MPa	10	-1/40
0...16 bar / 0...1,6 MPa	11	-1/40
0...20 bar / 0...2 MPa	B5	-1/40
-1...1 bar / -100...100 kPa	D6	-1/10

* accuracy 0,5% F.S.

⁽¹⁾ not for EEx

Output signal

- 4 4...20 mA 2-wire
- H 4...20 mA 2-wire, -25...120 °C
- E 4...20 mA 2-wire, II 1G EEx ia IIC T4/T6
- M 4...20 mA 2-wire, I M2 EEx ia I

Range

See table on the left
99 non standard range (on request)

Process connection and material

- 1 G1/2A DIN 3852 1.4404
- X Clamp 3/4", DN 10...20, (on request)
- 9 others (on request)

Sensor seal

- 1 FPM (Viton), Standard
- 2 NBR (Perbuan), max. 80 °C
- 3 EPDM
- 9 others (on request)

Electrical connection

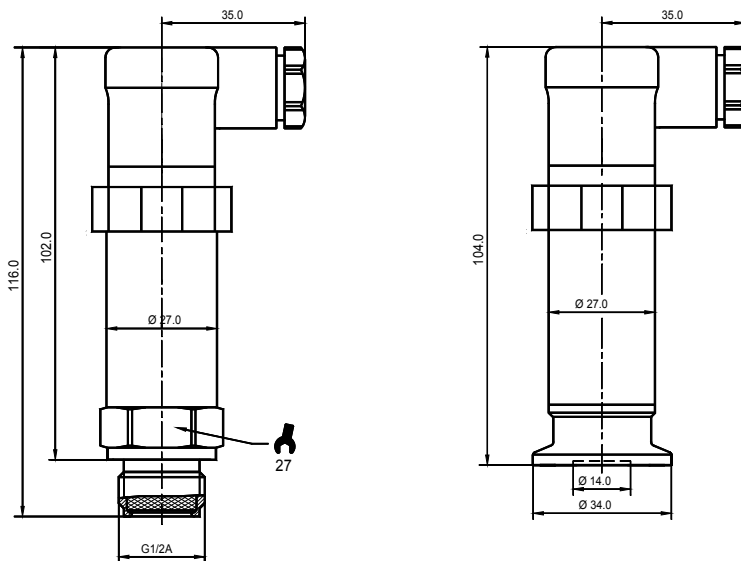
- 0 5m cable, IP 67
- 1 Connector EN 175301-803A IP 67
- 6 2m cable IP 67
- A Connector M12x1, IP 67
- H 10m Cable, IP 67
- R 25m Cable, IP67
- 9 others (on request)

Options

- 0 without potted electronic
- 1 Potted electronic



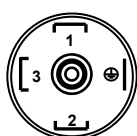
Dimensions (mm)



EEx ia IIC T4/T6 are 20mm longer.

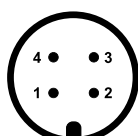
Electrical connections

Connector EN 175301-803A



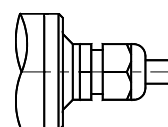
- 4...20 mA 2-wires
- PIN1 Signal +
- PIN2 Signal -
- 0...10V 3-wires
- PIN1 in +
- PIN2 in -
- PIN3 out +

M12x1, 4-pin Connector



- 4...20 mA 2-wires
- PIN1 (br) Signal +
- PIN3 (b) Signal -
- 0...10V 3-wires
- PIN1 (br) in +
- PIN3 (b) in -
- PIN4 (bl) out +

Cable connection



- 4...20 mA 2-wires
- red Signal +
- black Signal -
- 0...10V 3-wires
- red in +
- black in -
- white out +

Modifications reserved without notice 11.14